


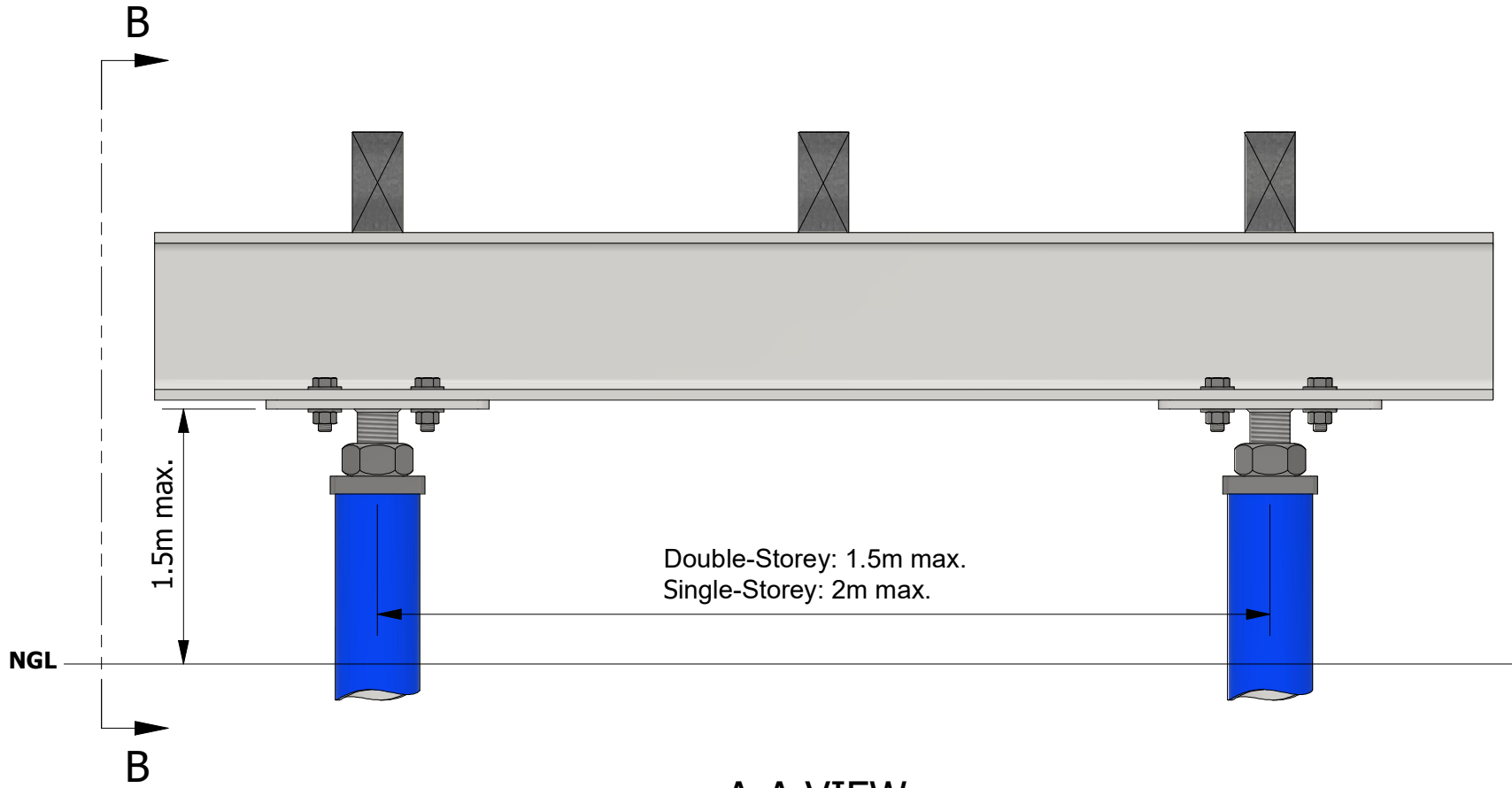
**PLAN VIEW**

**KEY ASPECTS TO NOTE:**

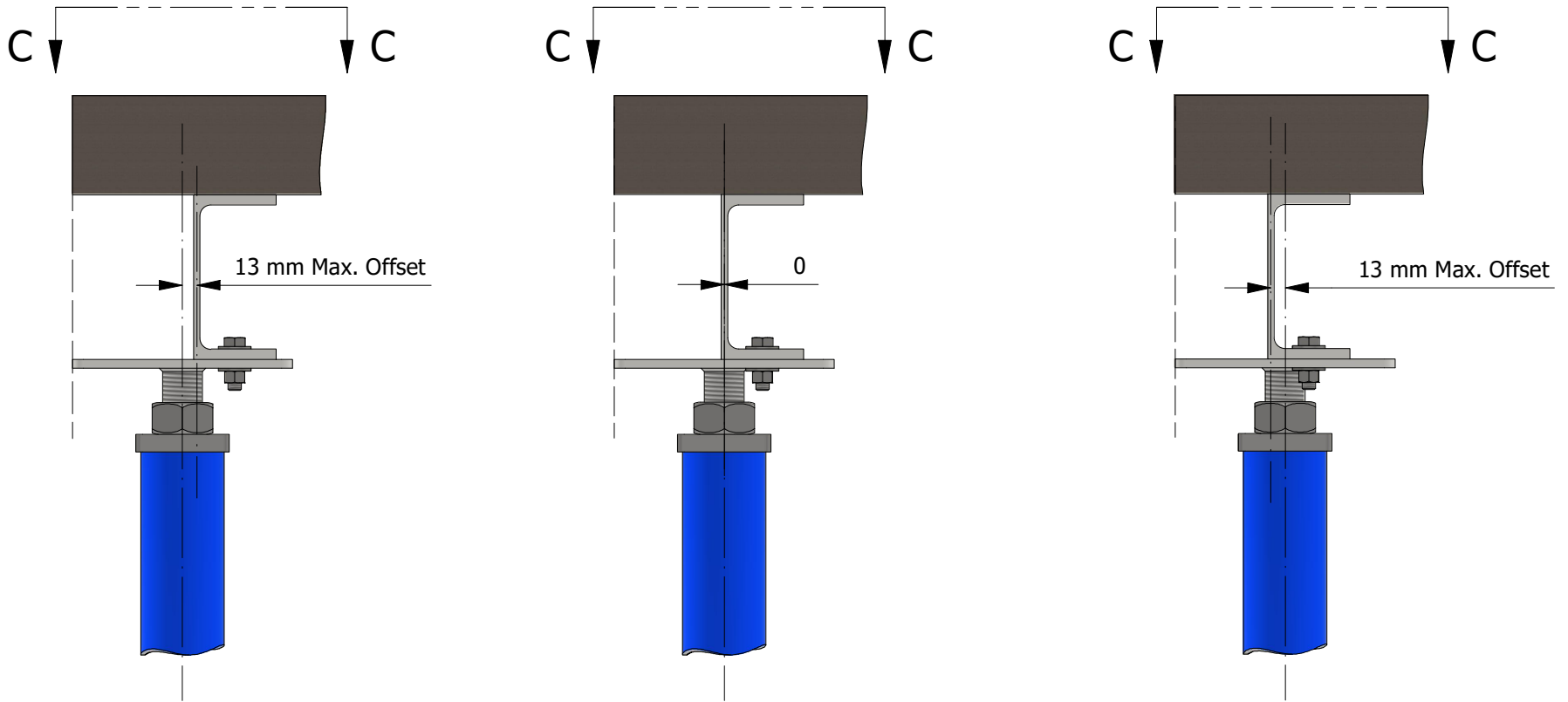
- The Katana Raised Floor System allows for a maximum SWL of 80kN.
- Ensure all loads are positioned at the centre of the piles, with a permissible offset of  $\pm 13\text{mm}$ .
- A lock nut must be installed on each pile within the raised floor systems.
- A general guideline is to maintain Katana Raised Floor Systems at a height no greater than 1.5m above the ground.
- For double-storey structures, the Katana Raised Floor Pile spacing should not exceed 1.5m, while for single-storey buildings, it should not exceed 2m.
- The default coating system for the Katana Raised Floor System exposed to environments with corrosivity factors C1, C2 and C3 is galvanising.
- Collaborate with Katana to ensure the appropriate setout of piles and confirm their locations during and after installation completion.

DRAWN JL		15/04/2024			
CHECKED MA		15/04/2024			
TITLE				Typical Raised Floor System Plan	
SIZE A3	DWG NO PFC_000		REV A		
SCALE	1 / 12	2		SHEET 1 OF 6	


**OPTION 1: 200x200 SLOTTED BEARER PLATE**

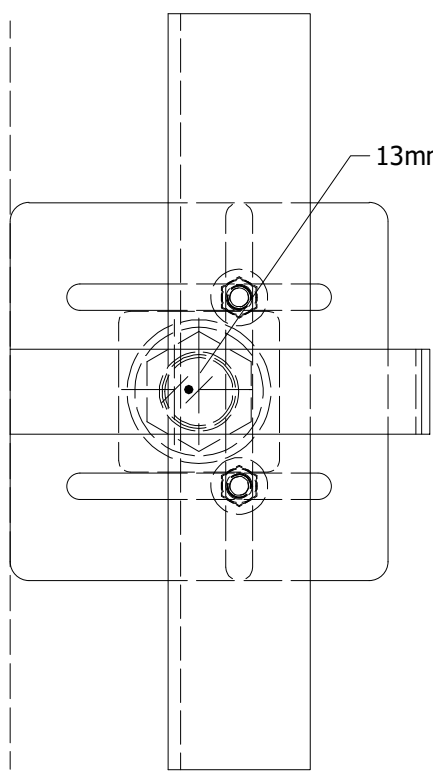


**A-A VIEW**

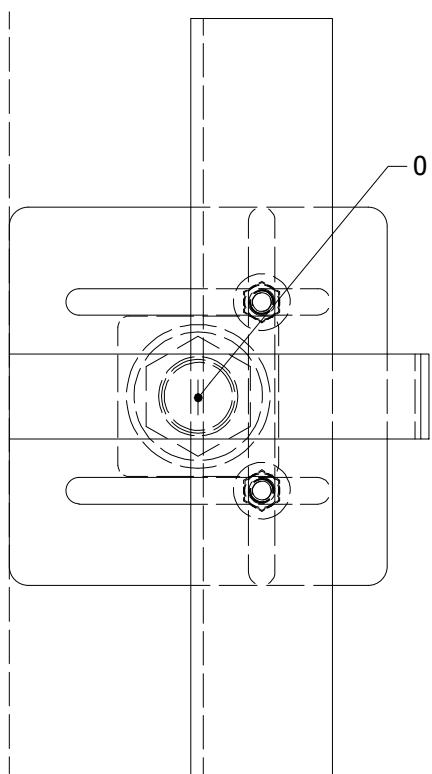


**B-B VIEW**

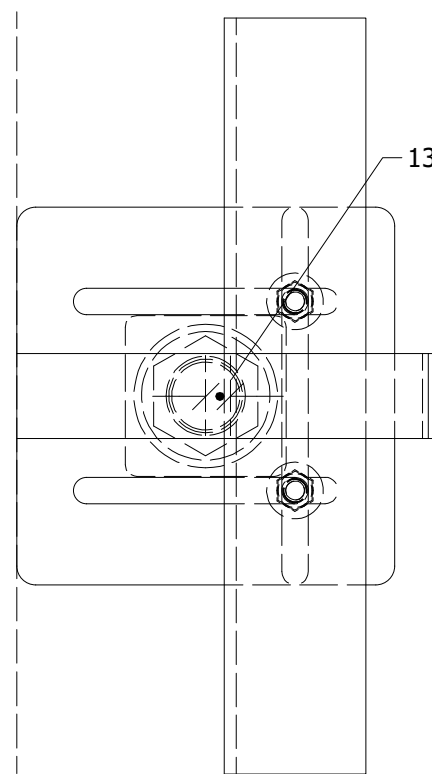
DRAWN		8/05/2024			
JL					
CHECKED		8/05/2024		TITLE	
MA				Raised Floor & PFC Section Views - Sheet 1	
SIZE		DWG NO		REV	
A3		PFC_001		A	
SCALE	1 / 6			SHEET 2 OF 6	



13mm Max. Offset




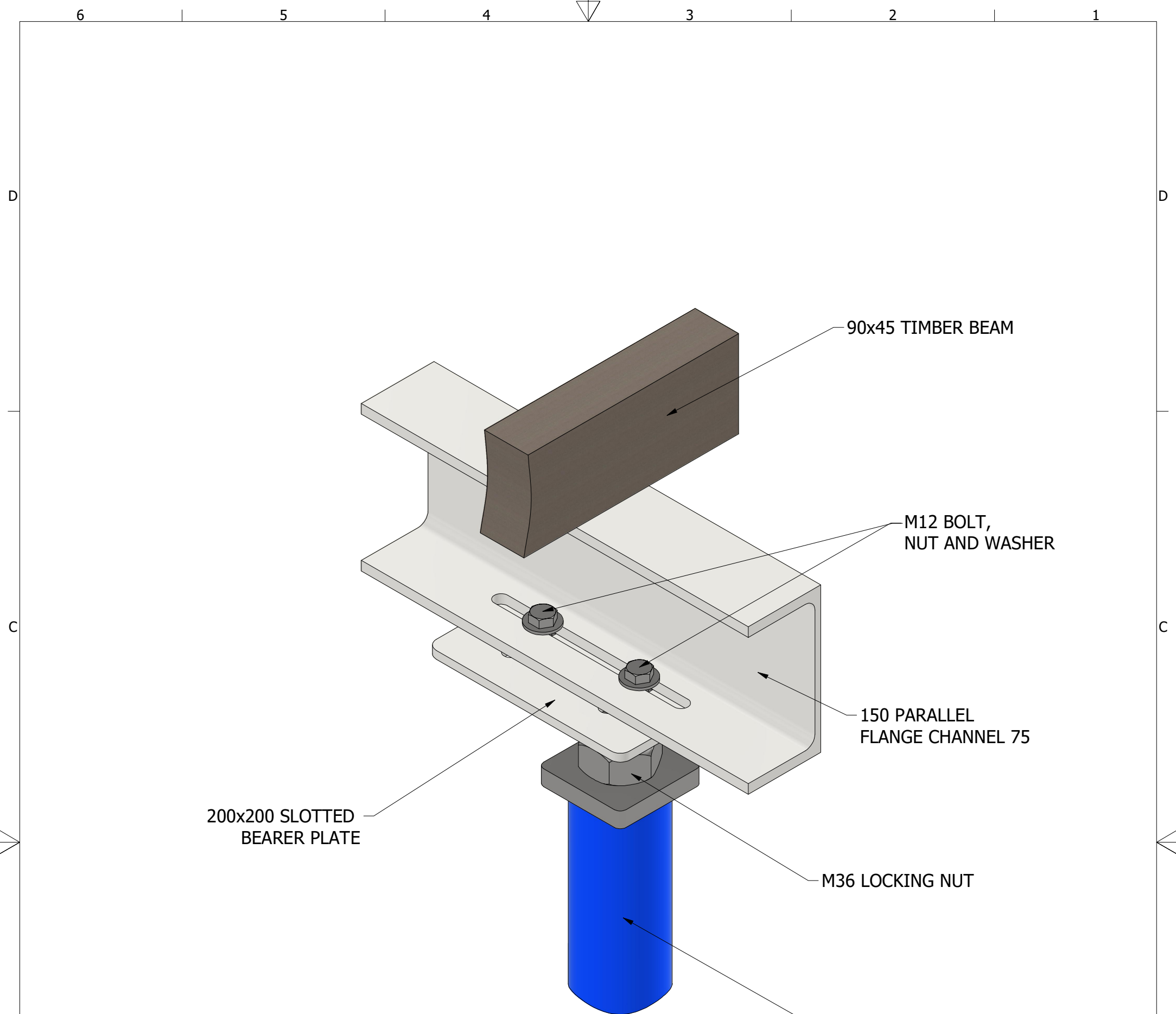
0




13mm Max. Offset

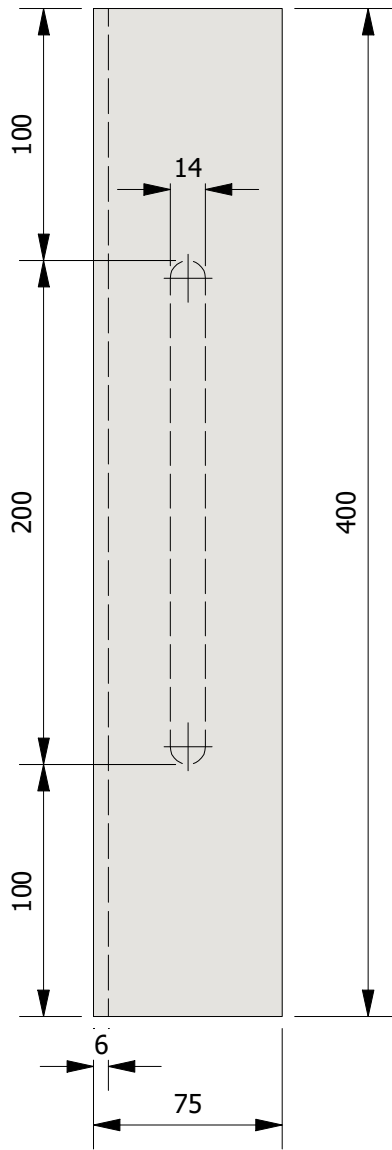
C-C VIEW

DRAWN		15/04/2024			
JL					
CHECKED		15/04/2024		TITLE	
MA				Raised Floor & PFC Section Views - Sheet 2	
SIZE		DWG NO		REV	
A3		PFC_002		A	
SCALE	1 / 4			SHEET 3 OF 6	

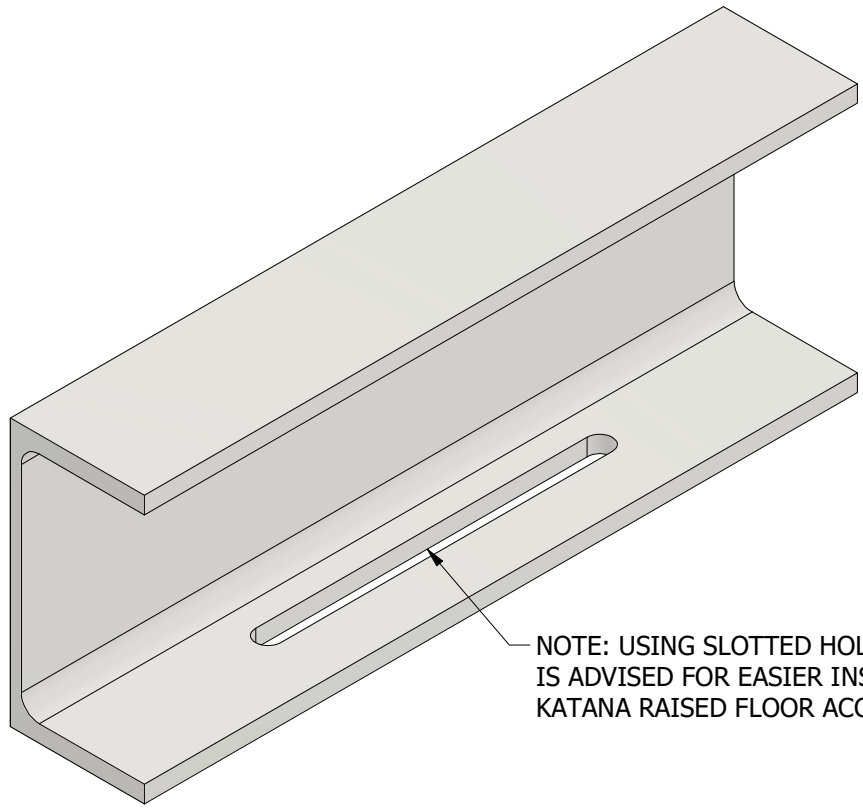


ISOMETRIC VIEW

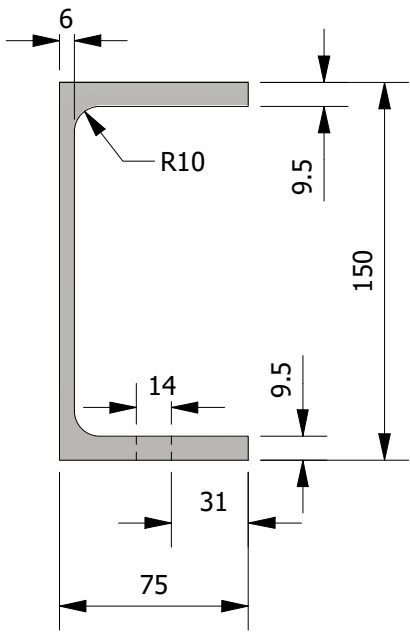
DRAWN		8/05/2024			
JL					
CHECKED		8/05/2024		TITLE Raised Floor & PFC 3D Assembly View - Sheet 1	
MA					
SIZE		DWG NO		REV	
A3		PFC_003		A	
SCALE	1 / 3			SHEET	4 OF 6



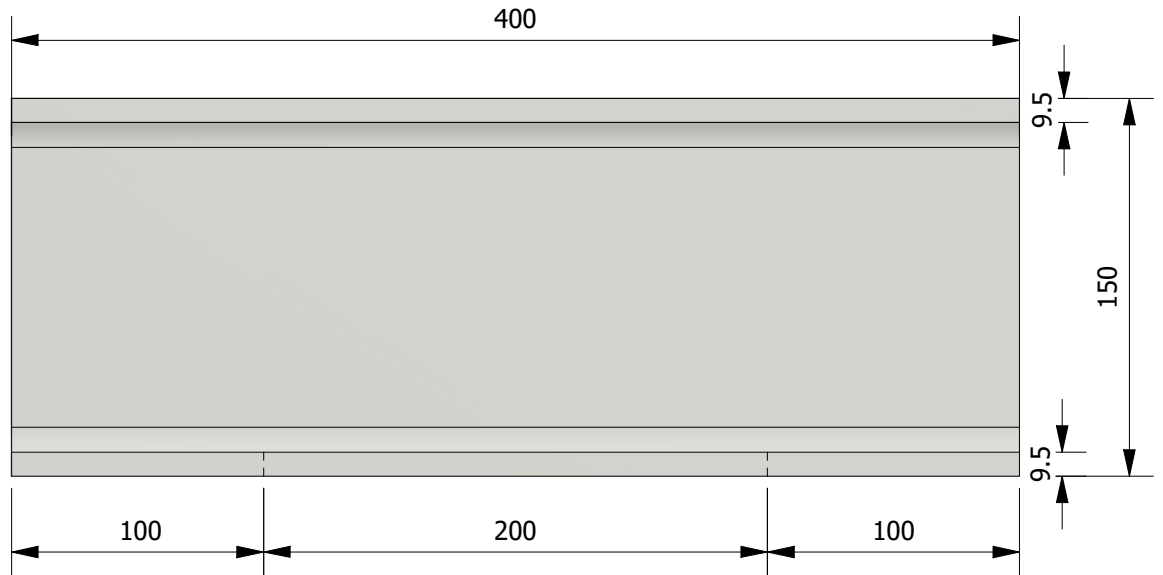
**TOP VIEW**




**ISOMETRIC VIEW**  
(FOR 400mm LONG SECTION)

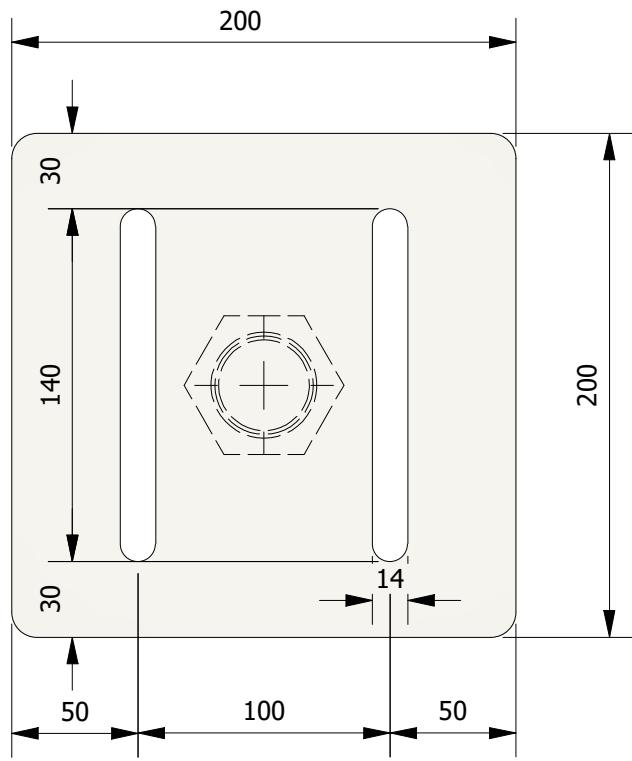


**SIDE VIEW**

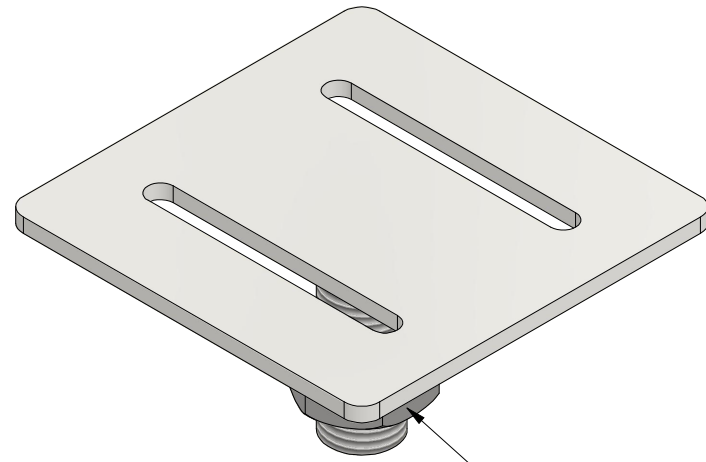


**FRONT VIEW**

DRAWN		8/05/2024			
JL					
CHECKED		8/05/2024		TITLE	
MA				150 Parallel Flange Channel 75	
SIZE	DWG NO	REV			
A3	PFC_004	A			
SCALE	1 / 3	SHEET	5 OF 6		

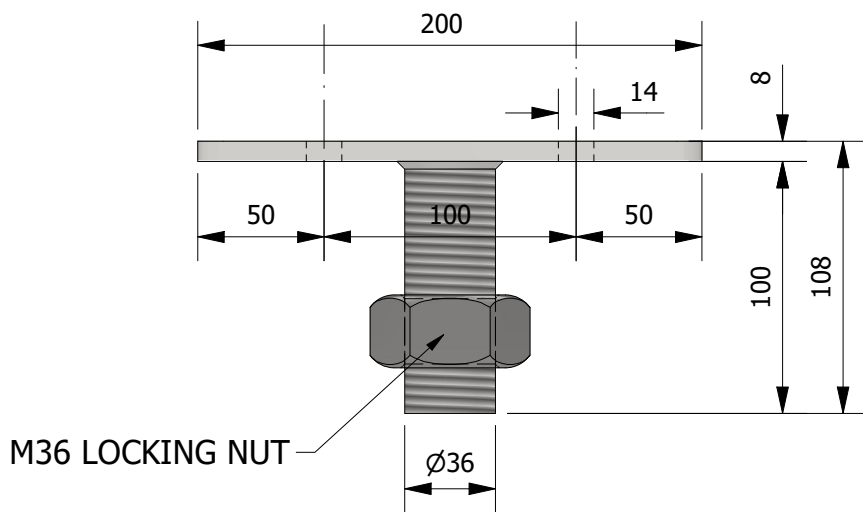


TOP VIEW

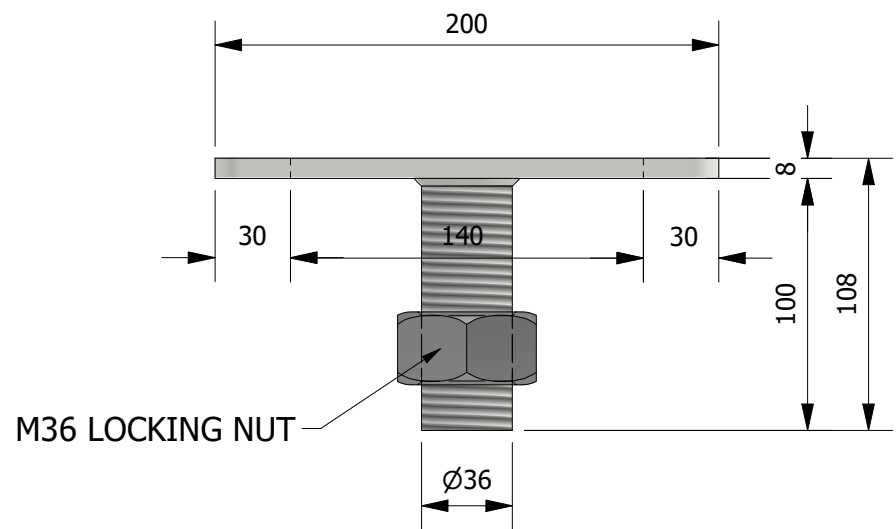


M36 LOCKING NUT


ISOMETRIC VIEW



FRONT VIEW



SIDE VIEW

DRAWN		9/05/2024			
JL					
CHECKED		9/05/2024		TITLE	
MA				200x200 Slotted Bearer Plate	
SIZE		DWG NO		REV	
A3		PFC_005		A	
SCALE	1 / 3			SHEET	6 OF 6